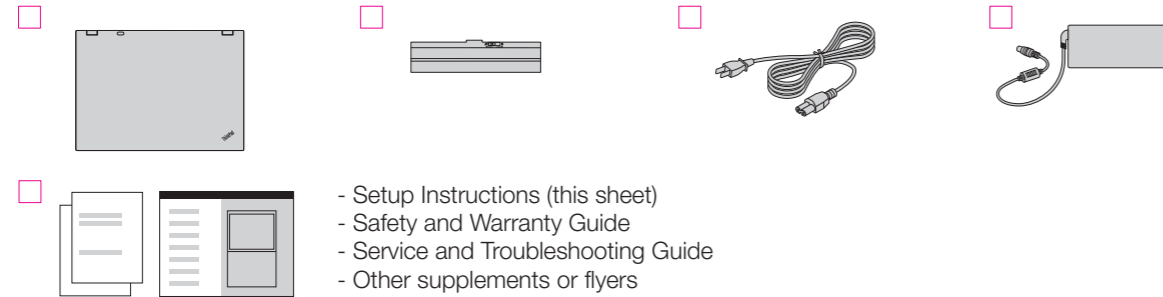


ThinkPad®



Unpack

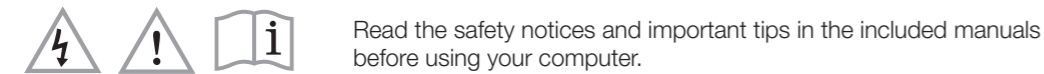


- - Setup Instructions (this sheet)
- - Safety and Warranty Guide
- - Service and Troubleshooting Guide
- - Other supplements or flyers

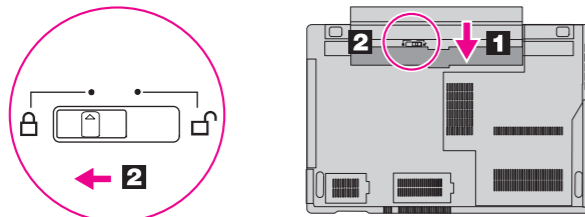
Notes:

- 1) Some models may contain items that are not listed.
- 2) If any item is missing or damaged, contact your place of purchase.
- 3) Everything for recovering factory-installed files and applications is in the Lenovo® partition on your hard disk.
Important: Before removing the Lenovo partition, be sure to create a recovery disc. For more information, see "Recovery overview" in Access Help.

Initial Setup Instructions

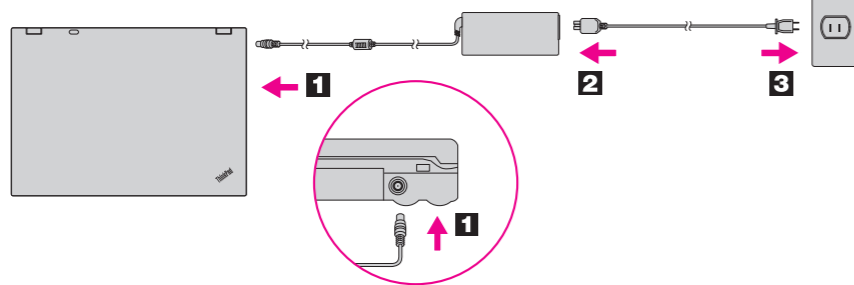


1 Install the battery pack:



Note: This system does not support batteries that are not genuine Lenovo-made or authorized. The system will continue to boot, but may not charge unauthorized batteries.

2 Connect to power:



3 Turn on the power:



4 Point and click with UltraNav® Multi-pointing Navigation System:

Press the TrackPoint® cap or move across the touch pad in the direction you want to move the pointer. The left and right buttons below the space bar and touch pad function like mouse buttons.

5 Configure the Operating System following on-screen instructions:

This process takes several minutes.

6 For more details, refer to Access Help:

For how to open Access Help, see the reverse side of this page.

ThinkVantage® Design

1 UltraConnect™ wireless antennas

2 Integrated camera*

3 Built-in microphone

4 Microphone mute button



5 Volume control buttons



6 Speaker mute button



7 Power button



8 ThinkVantage® button



9 Web browser back and forward



10 Fingerprint reader*



11 Wireless radio switch

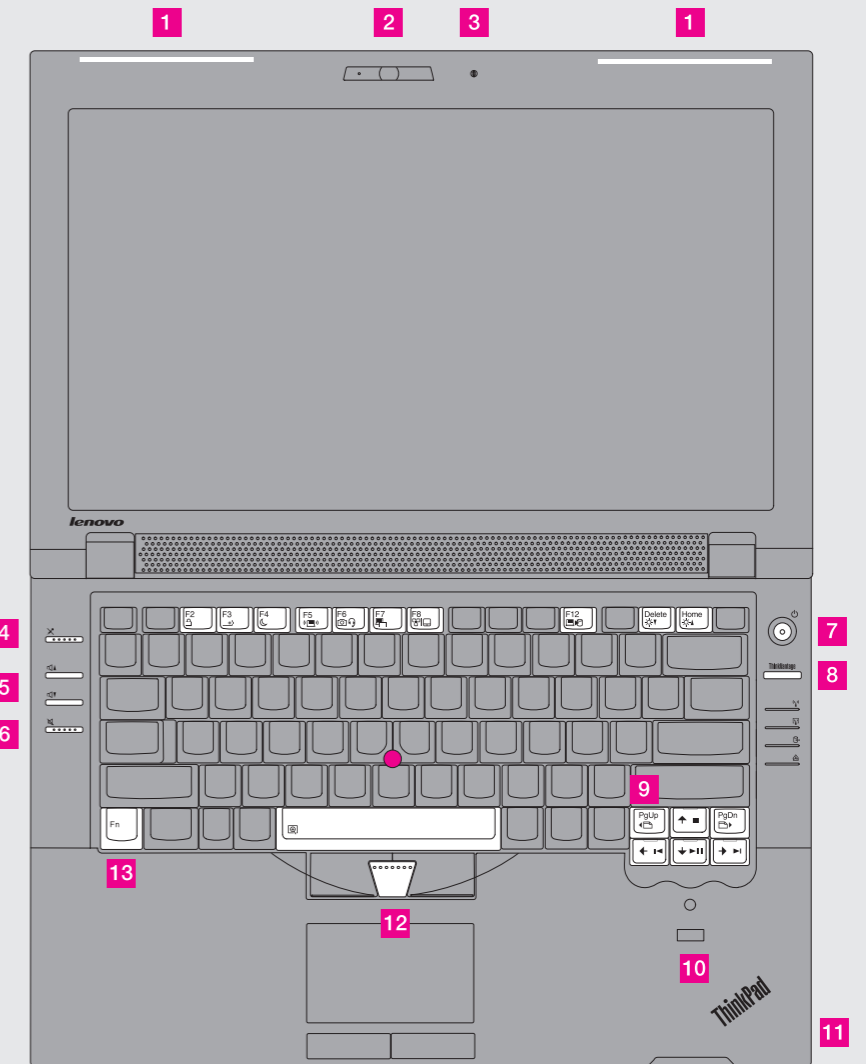


12 TrackPoint center button

13 Fn key

Use in combination with other keys to access special ThinkPad® features.

	Lock your computer		Change input device settings
	Manage battery & power		Enter hibernation
	Enter sleep (standby)		Multimedia controls
	Manage wireless connections		Change display brightness
	Change camera & microphone mute settings		Magnify screen contents
	Change display settings		



*Select models

Thank you for choosing a ThinkPad Notebook.

The ThinkPad Notebook is loaded with advanced features.

Stylish full-featured widescreen notebooks

Your computer is perfect for helping to run a small business or just enjoying computing at home with the newest processors, advanced graphics, large hard drives (capable of storing vast music, video, and picture collections), and other popular features.

Complete device connectivity

Device ports and connectors, such as high-speed USB 2.0 ports and a 7-in-1 card reader, get better connectivity and easier file transfer from all your digital media devices.

Green design

Your computer is rated EPEAT Gold for low energy use and minimal impact on the environment.

Multimedia features

Multimedia features, such as an integrated camera*, an HDMI (High-Definition Interface) port, and an integrated Blu-ray readable drive or Multiburner drive, meet all of your multimedia needs.

Optimized network connectivity

Advanced network connectivity options, such as Ethernet, wireless LAN, WiMAX*, and wireless WAN*, help you connect to your network or the Internet under the best conditions.

To learn more about network connections, see "Connecting to the network" in Access Help.

*Select models

ThinkVantage Technologies

ThinkVantage Technologies are advanced technologies that enable you to improve productivity, protect your data, and reduce overall lifecycle costs.

Using Access Help (online manual) and the included manuals

To find detailed information about your computer, open Access Help, or see the Safety and Warranty Guide or the Service and Troubleshooting Guide.



Access Help

Access Help is a comprehensive online manual that provides answers to most of your questions about your computer, helps you to configure preinstalled features and tools, or solve problems.

To open Access Help, do as follows:

For Windows® 7:

Click Start and click Help and Support. In the Windows Help and Support, click "Lenovo Access Help."

For Windows Vista® and Windows XP:

- Press the ThinkVantage button. Under Quick Links in the ThinkVantage Productivity Center, click "Access on-system help."
- Click Start, move the pointer to All Programs; then to ThinkVantage. Click Access Help.



Safety and Warranty Guide

- Important safety information
- Operating environment and other important notices
- Warranty information

Service and Troubleshooting Guide

- Introduction to other sources of information
- Diagnostics
- Help and service
- Warranty information for your computer

© Copyright Lenovo 2010.

The following terms are trademarks of Lenovo in the United States, other countries, or both:

Lenovo
ThinkPad
ThinkVantage

TrackPoint
UltraConnect
UltraNav

Windows and Windows Vista are trademarks of Microsoft Corporation in the United States, other countries, or both. Other company, product, or service names may be trademarks or service marks of others.

Printed in China

For Barcode Position Only

